



DRONE PARTS AND ATTACHMENTS

CUSTOM DRONES FOR EVERY INDUSTRY



skygen UAV Aviation
Technology Development

0086-13656039184
skygentech@163.com

BATTERY POWERED DRONE PLATFORM



Model: S6-5D
Wheelbase: 120cm
Full span size: 124cm-124cm-73cm
Folded size: 67cm-53cm-73cm
Drone weight: 5.5kg
Max carry weight: 5kg
Fly time: >70min
Wind resistance level: 8
Protection level: IP56
Flight speed: 0-20m/s
Voltage: 62.3v
Battery capacity: 22000MAH
Altitude: >5000m
Operational temperature: -45° to 70°



Model: 3WWDZF4-10D
Wheelbase: 140cm
Full span size: 150cm-150cm-60cm
Folded size: 62cm-62cm-60cm
Drone weight: 11.85kg
Max carry weight: 10kg
Fly time: >65min
Wind resistance level: 8
Protection level: IP56
Flight speed: 0-20m/s
Voltage: 62.3v
Battery capacity: 22000MAh
Altitude: >5000m
Operational temperature: -45° to 70°



Model: 3WWDZF6-20D
Wheelbase: 168cm
Full span size: 178cm-178cm-68cm
Folded size: 89cm-92cm-68cm
Drone weight: 15.2kg
Max carry weight: 20kg
Fly time: >60min
Wind resistance level: 9
Protection level: IP56
Flight speed: 0-20m/s
Voltage: 52v
Battery capacity: 62000MAH
Altitude: >5000m
Operational temperature: -45° to 70°



3WWDZF6-30D
Wheelbase: 198cm
Full span size: 208cm-208cm-73cm
Folded size: 89cm-92cm-73cm
Drone weight: 17.8kg
Max carry weight: 30kg
Fly time: >80min
Wind resistance level: 9
Protection level: IP56
Flight speed: 0-20m/s
Voltage: 62.3v
Battery capacity: 62000MAH
Altitude: >5000m
Operational temperature: -45° to 70°



3WWDZF4-30DS
Wheelbase: 172cm
Full span size: 126cm-120cm-68cm
Folded size: 48cm-48cm-68cm
Drone weight: 17.8kg
Max carry weight: 30kg
Fly time: >110min
Wind resistance level: 9
Protection level: IP56
Flight speed: 0-20m/s
Voltage: 78.3v
Battery capacity: 80000MAh
Altitude: >5000m
Operational temperature: -45° to 70°



Model: 3WWDZF8-50D
Wheelbase: 250cm
Full span size: 260cm-260cm-60cm
Folded size: 76cm-76cm-120cm
Drone weight: 31kg
Max carry weight: 50kg
Fly time: >50min
Wind resistance level: 9
Protection level: IP56
Flight speed: 0-20m/s
Voltage: 62.3v
Battery capacity: 56000MAh
Altitude: >5000m
Operational temperature: -45° to 70°



3WWDZF8-50DS
Wheelbase: 280cm
Full span size: 295cm-295cm-79cm
Folded size: 190cm-80cm-79cm
Drone weight: 33kg
Max carry weight: 80kg
Fly time: >95min
Wind resistance level: 9
Protection level: IP56
Flight speed: 0-20m/s
Voltage: 62.3v
Battery capacity: 140000MAh
Altitude: >5000m
Operational temperature: -45° to 70°



3WWDZF6-50D
Wheelbase: 238cm
Full span size: 258cm-225cm-84cm
Folded size: 100cm-90cm-84cm
Drone weight: 31.6kg
Max carry weight: 60kg
Fly time: >100min
Wind resistance level: 10
Protection level: IP56
Flight speed: 0-20m/s
Voltage: 78.3v
Battery capacity: 140000MAh
Altitude: >5000m
Operational temperature: -45° to 70°



3WWDZF6-50DS
Wheelbase: 255cm
Full span size: 265cm-235cm-84cm
Folded size: 120cm-100cm-84cm
Drone weight: 38.5kg
Max carry weight: 80kg
Fly time: >120min
Wind resistance level: 10
Protection level: IP56
Flight speed: 0-20m/s
Voltage: 78.3v
Battery capacity: 160000MAh
Altitude: >5000m
Operational temperature: -45° to 70°



3WWDZF4-50D
Wheelbase: 180cm
Full span size: 190cm-190cm-73cm
Folded size: 800cm-800cm-73cm
Drone weight: 23.2kg
Max carry weight: 60kg
Fly time: >70min
Wind resistance level: 9
Protection level: IP56
Flight speed: 0-20m/s
Voltage: 62.3v
Battery capacity: 80000MAh
Altitude: >5000m
Operational temperature: -45° to 70°



3WWDZF4-50DS
Wheelbase: 218cm
Full span size: 158cm-150cm-92cm
Folded size: 630cm-600cm-92cm
Drone weight: 22.9kg
Max carry weight: 60kg
Fly time: >120min
Wind resistance level: 9
Protection level: IP56
Flight speed: 0-20m/s
Voltage: 78.3v
Battery capacity: 88000MAh
Altitude: >5000m
Operational temperature: -45° to 70°



3WWDZF6-100D
Wheelbase: 255cm
Full span size: 265cm-235cm-84cm
Folded size: 120cm-100cm-84cm
Drone weight: 46kg
Max carry weight: 100kg
Fly time: >80min
Wind resistance level: 10
Protection level: IP56
Flight speed: 0-20m/s
Voltage: 78.3v
Battery capacity: 160000MAh
Altitude: >5000m
Operational temperature: -45° to 70°



3WWDZF8-100DS

Wheelbase: 380cm

Full span size: 400cm-400cm-120cm

Folded size: 175cm-175cm-120cm

Drone weight: 57kg

Max carry weight: 100kg

Fly time: >100min

Wind resistance level: 10

Protection level: IP56

Flight speed: 0-20m/s

Voltage: 78.3v

Battery capacity: 176000MAh

Altitude: >5000m

Operational temperature: -45° to 70°

3WWDZF8-200D

Wheelbase: 380cm

Full span size: 400cm-400cm-120cm

Folded size: 100cm-100cm-120cm

Drone weight: 91kg

Max carry weight: 200kg

Fly time: >100min

Wind resistance level: 10

Protection level: IP56

Flight speed: 0-20m/s

Voltage: 78.3v

Battery capacity: 352000MAh

Altitude: >5000m

Operational temperature: -45° to 70°

FUEL POWERED DRONE PLATFORM



Model: 3WWDZF4-10DH
Wheelbase: 125cm
Full span size: 110cm-95cm-48cm
Folded size: 55cm-43cm-48cm
Drone weight: 17.5kg
Max carry weight: 10kg
Fly time: >240min
Wind resistance level: 10
Protection level: IP56
Flight speed: 0-20m/s
Engine power: 5000w
Altitude: <5000m
Operational temperature: -45° to 70°
Fuel type: 92petrol + 2T diesel

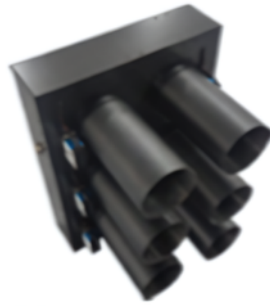
Model: 3WWDZF6-30DH
Wheelbase: 198cm
Full span size: 208cm-208cm-73cm
Folded size: 89cm-92cm-73cm
Drone weight: 31.2kg
Max carry weight: 30kg
Fly time: >260min
Wind resistance level: 10
Protection level: IP56
Flight speed: 0-20m/s
Engine power: 7000w
Altitude: <5000m
Operational temperature: -45° to 70°
Fuel type: 92petrol + 2T diesel

Model: 3WWDZF6-50DH
Wheelbase: 255cm
Full span size: 265cm-235cm-92cm
Folded size: 120cm-100cm-92cm
Drone weight: 46.9kg
Max carry weight: 50kg
Fly time: >5hours
Wind resistance level: 10
Protection level: IP56
Flight speed: 0-20m/s
Engine power: 15kw
Altitude: <5000m
Operational temperature: -45° to 70°
Fuel type: 92petrol + 2T diesel

CUSTOMISABLE ATTACHMENT AND PARTS



One-click aiming BB rifle pylon. Other types of pylons can be customized.



60-82 cal Projectile launcher, 120 caliber can be customised or freely combined. 6-16 pieces can be mounted according to different drone platform.



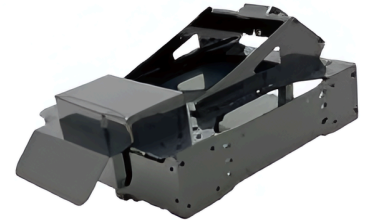
60-90 cal Launcher: can be equipped with 1-10 projectiles.



60-82 cal projectile release rack: can be equipped with 2-10 projectiles.



38mm launcher, can carry 3-20 projectiles. able to deploy fire extinguishing bombs, tear gas and stun grenades.



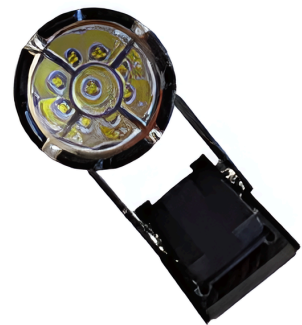
- A4 flyer/poster distributor rack
- 2000 sheets capacity
- 3 speeds



- AI speaker
- 1000m effective transmission range
- Cassete compatible
- Loop function



- Net caster
- Effect range >10m
- Capture area 2 square metres



- 200w high efficiency search light
- 360 x 90 rotation
- 50m effective range
- 10 square metres illumination area
- Adjustable lighting strength and lighting modes.



- Cargo holder
- Automatic release



- Heavy load electronic thrower
- 120kg carrying capability
- Remote release function
- Destination preset release function



- AI cargo cable
- Slow release
- Ensure cargo safety



- Drone anti jamming system
- RTK high accuracy positioning



- 50KM all in one digital controller
- Anti jamming
- Long range high altitude
- Upgradable to 5G, limitless range



- Fire grade water hose system
- Fire truck connection compatible
- 50-150m length selection



- Deployment system
- High accuracy air to ground distance scanning
- Air detonation capable
- 5L-10L-25L-50L water&powder anti-fire bombs selection



- Anti-fire ball launcher
- 6 powder balls capacity
- Individual and mass release selection
- upgradable to 20 ball capacity



- Firefighting thrower
- Capacity selection: 10L-20L-30L
- Ammo: dry powder
- Projection range >10m



- Drone supply box
- 30L capacity
- Push button side door open
- Remote bottom door release
- Upgradable to higher capacity



- Mechanical arm
- Max grabbing width 15cm
- Minimum grabbing width 5cm
- First person viewpoint
- Ideal for removing dangerous items



- Flame thrower
- >5m throwing range
- 5L fuel capacity
- Remote firing



- 60x zoom comprehensive super high resolution camera
- Cross hair auto focus
- Object auto tracking
- 3-axis photoelectric pod



- 60x zoom
- Double beam infrared night vision
- AI powered auto tracking and recognition
- 3-axis pod



- 60x zoom
- Thermal imaging temperature measurement
- Distance measurement
- AI auto recognition, tracking and lock on
- 3-axis pod



- Thermal imaging
- 3-axis photoelectric pod
- Cross hair focus



- 23x zoom auto focus
- Infrared night vision
- 800m night vision range
- AI powered tracking



- Full bandwidth drone detector
- 1000m detection range
- Auto detection
- Warning alarm



- 500kg electric cable
- Vertical pull power 380kg

INTEGRATED SURVEILLANCE AND COMBAT DRONE



Model: S7
Full span size: 35cm-29cm-11cm
Folded size: 18cm-9cm-11cm
Drone weight: 0.68kg
Max carry weight: 2.2kg
Fly time: 30 minutes
Operational range: >5km (50km upgradable)
Accuracy: <0.5m (no wind)
Altitude: >5000m
Operational temperature: -40° to 70°
Load option: Automatic buckle, fast loading
Flying mode: Automatic/Manual
Highlights:
<ul style="list-style-type: none">• Small• Big payload• 50m per second flying speed• Stealthy, hard to detect• Operate multiple units with 1 controller• Cross hair aiming

Model: S10
Full span size: 39cm-32.6cm-11cm
Folded size: 21cm-9cm-11cm
Drone weight: 0.75kg
Max carry weight: 3kg
Fly time: 30 minutes
Operational range: >5km(50km upgradable)
Accuracy: <0.5m(no wind)
Altitude: >5000m
Operational temperature: -40°to70°
Load option: Automatic buckle, fast loading
Flying mode: Automatic/Manual
Highlights:
<ul style="list-style-type: none">• Small• Big payload• 50m per second flying speed• Stealthy, hard to detect• Operate multiple units with 1 controller• Cross hair aiming

Model: S10
Full span size: 75cm-56cm-18.5cm
Folded size: 37cm-25cm-18.5
Drone weight: 1.8kg
Max carry weight: 1x60/82calibre payload
Fly time: 30 minutes
Operational range: >5km (50km upgradable)
Accuracy: <0.5m(no wind)
Altitude: >5000m
Operational temperature: -40° to 70°
Load option: Automatic buckle, fast loading
Flying mode: Automatic/Manual
Highlights:
<ul style="list-style-type: none">• Small• Big payload• Fast-40m per second flying speed• Stealthy, hard to detect• Cross hair aiming• Auto lock on• Auto payload release• Live view via controller screen



Model: 3WWDZF4-10D
Full span size: 120cm-120cm-60cm
Folded size: 65cm-52cm-60cm
Drone weight: 11.8kg
Max carry weight: 4x60/82calibre payload
Fly time: 35 minutes
Operational range: >5km(50km upgradable)
Accuracy: <0.5m(no wind)
Altitude: >5000m
Operational temperature: -40°to70°
Load option: Automatic buckle, fast loading
Flying mode: Automatic/Manual
Highlights:

- Small
- Big payload
- 40m per second flying speed
- Stealthy, hard to detect
- Quiet
- Cross hair aiming
- Auto lock on
- Auto payload release
- Live view via controller screen
- Compatible with various payloads
- 4x60/82 calibre payloads

Model: 3WWDZF4-10s
Full span size: 98cm-98cm-56cm
Folded size: 50cm-56cm-56cm
Drone weight: 11.5kg
Max carry weight: 4x60/82calibre payload
Fly time: 45 minutes
Operational range: >5km(50km upgradable)
Accuracy: <0.5m(no wind)
Altitude: >5000m
Operational temperature: -40°to70°
Load option: Automatic buckle, fast loading
Flying mode: Automatic/Manual
Highlights:

- Small
- Big payload
- 40m per second flying speed
- Stealth material
- Quiet
- Cross hair aiming
- Fully automatic flight and payload release
- Auto focus/lock on
- Live feed via controller screen
- Compatible with various payloads and holders
- 4x60/82calibre payloads

Model: H4
Full span size: 118cm-108cm-62cm
Folded size: 66cm-60cm-20cm
Drone weight: 11.1kg
Max carry weight: 6x60/82calibre payload
Fly time: 50 minutes
Operational range: >5km(50km upgradable)
Accuracy: <0.5m(no wind)
Altitude: >5000m
Operational temperature: -40°to70°
Load option: Automatic buckle, fast loading
Flying mode: Automatic/Manual
Highlights:

- Small
- Big payload
- 40m per second flying speed
- Stealth material
- Quiet
- Cross hair aiming
- Fully automatic flight and payload release
- Auto focus/lock on
- Live feed via controller screen
- Compatible with various payloads and holders



Model: 3WWDZF6-30D
Full span size:198cm-198cm-73cm
Folded size:65cm-60cm-73cm
Drone weight: 17kg
Max carry weight: 8x60/82calibre payload
Fly time: 50 minutes
Operational range: >5km(50km upgradable)
Accuracy: <0.5m(no wind)
Altitude: >5000m
Operational temperature: -40°to70°
Load option: Automatic buckle, fast loading
Flying mode: Automatic/Manual
Highlights:
<ul style="list-style-type: none"> • Small • Big payload • 40m per second flying speed • Stealth material • Quiet • Cross hair aiming • Fully automatic flight and payload release • Auto focus/lock on • Live feed via controller screen • Compatible with various payloads and holders • 6x60/82calibre payload

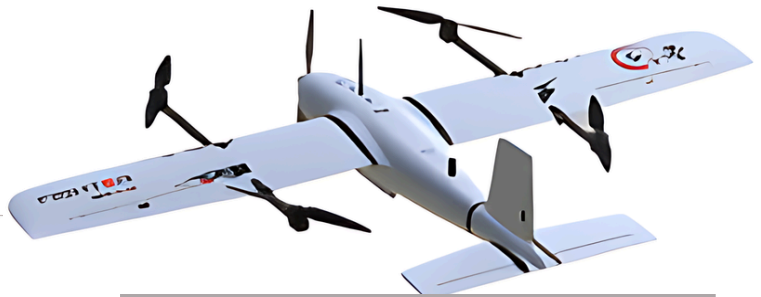


Model: 3WWDZF4-50DS
Full span size:198cm-198cm-73cm
Folded size:65cm-60cm-73cm
Drone weight: 17kg
Max carry weight: 8x60/82calibre payload
Fly time: 50 minutes
Operational range: >5km(50km upgradable)
Accuracy: <0.5m(no wind)
Altitude: >5000m
Operational temperature: -40°to70°
Load option: Automatic buckle, fast loading
Flying mode: Automatic/Manual
Highlights:
<ul style="list-style-type: none"> • Small • Big payload • 40m per second flying speed • Stealth material • Quiet • Cross hair aiming • Fully automatic flight and payload release • Auto focus/lock on • Live feed via controller screen • Compatible with various payloads and holders • 6x60/82calibre payload



Model: 3WWDZF6-50DS
Full span size:265cm-235cm-84cm
Folded size:120cm-100cm-84cm
Drone weight: 38kg
Max carry weight:12x60/82 calibre, 3x120calibre payload
Fly time: 60 minutes
Operational range: >10km(50km upgradable)
Accuracy: <0.5m(no wind)
Altitude: >5000m
Operational temperature: -40°to70°
Load option: Automatic buckle, fast loading
Flying mode: Automatic/Manual
Highlights:
<ul style="list-style-type: none"> • Small • Big payload 50kg capacity • 40m per second flying speed • Stealth material • Quiet • Cross hair aiming • Fully automatic flight and payload release • Auto focus/lock on • Live feed via controller screen • Compatible with various payloads and holders • 12x60/82calibre and 3x120calibre payload • Anti jamming • GPS/GLONASS/BEIDOU systems compatible • 3 axis 30x observation platform

VERTICAL TAKE OFF PLATFORM



Model: CQ-20

Wing span: 218cm

Body length: 114cm

Take off weight: 6.5kg

Max carry weight: 1kg

Fly time: 120min

Operational range: >10km(50km upgradable)

Fly speed: 30metres per second

Altitude: >5000m

Operational temperature: -40° to 70°

Take off method: Vertical take off

Flying mode: Automatic/Manual

Highlights:

- Small and agile
- Fast and easy assemble
- Equipped with 10x focus observation platform
- Auto take off
- Flight by wire
- Target circling mode
- Auto/customisable return
- Auto descend
- Ideal for surveillance

Model: CQ-30

Wing span: 243cm

Body length: 145cm

Take off weight: 11.5kg

Max carry weight: 1.5kg

Fly time: 120min

Operational range: >10km(50km upgradable)

Fly speed: 30metres per second

Altitude: >5000m

Operational temperature: -40° to 70°

Take off method: Vertical take off

Flying mode: Automatic/Manual

Highlights:

- Small and agile
- Fast and easy assemble
- Equipped with 10x focus observation platform
- Auto take off
- Flight by wire
- Target circling mode
- Auto/customisable return
- Auto descend
- Ideal for surveillance





Model: CQ-50

Wing span: 250cm

Body length: 168cm

Take off weight: 12kg

Max carry weight: 3kg

Fly time: 150min

Operational range: >10km(50km upgradable)

Fly speed: 30metres per second

Altitude: >5000m

Operational temperature: -40° to 70°

Take off method:Vertical take off

Flying mode: Automatic/Manual

Highlights:

- Small and agile
- Fast and easy assemble
- Equipped with 10x focus observation platform
- Auto take off
- Flight by wire
- Target circling mode
- Auto/customisable return
- Auto descend
- Ideal for surveillance missions up to 100km radius

Model: CQ-70

Wing span: 350cm

Body length: 180cm

Take off weight: 24kg

Max carry weight: 12kg

Fly time: 200min

Operational range: >10km(50km upgradable)

Fly speed: 30metres per second

Altitude: >5000m

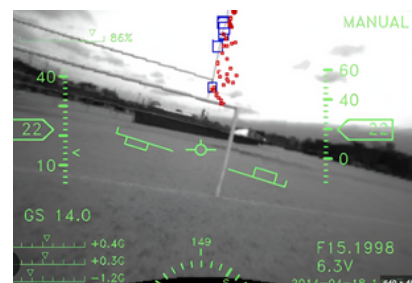
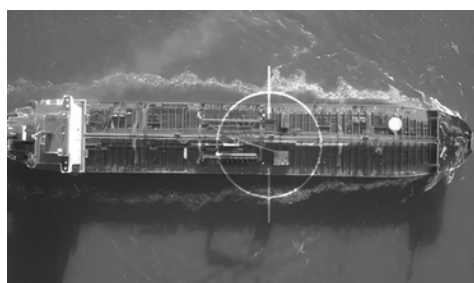
Operational temperature: -40° to 70°

Take off method:Vertical take off

Flying mode: Automatic/Manual

Highlights:

- Small and agile
- Fast and easy assemble
- Equipped with 10x focus observation platform
- Auto take off
- Flight by wire
- Target circling mode
- Auto/customisable return
- Auto descend
- Ideal for surveillance missions up to 200km radius



FIREFIGHTING DRONES



Model: 3WWDZF6-20D

Full span size: 178cm-178cm-68cm

Folded size: 89cm-92cm-60cm

Drone weight: 16.5kg

Max carry weight: 6x120mm Anti fire bombs

Fly time: 35 minutes

Operational range: >5km(50km upgradable)

Accuracy: <0.5m(no wind)

Altitude: >5000m

Operational temperature: -40° to 70°

Load option: Automatic buckle, fast loading

Flying mode: Automatic/Manual

Highlights:

- **Fast assemble**
- **FPV flying mode**
- **Big payload**
- **Cross hair aiming**
- **Ideal for fire fighting**

Model: 3WWDZF4-50DXF

Full span size: 190cm-190cm-73cm

Folded size: 80cm-80cm-73cm

Drone weight: 25.8kg

Max carry weight: 6xAnti fire rockets, various payload compatible

Fly time: 45 minutes

Operational range: >5km(50km upgradable)

Accuracy: <0.5m(no wind)

Altitude: >5000m

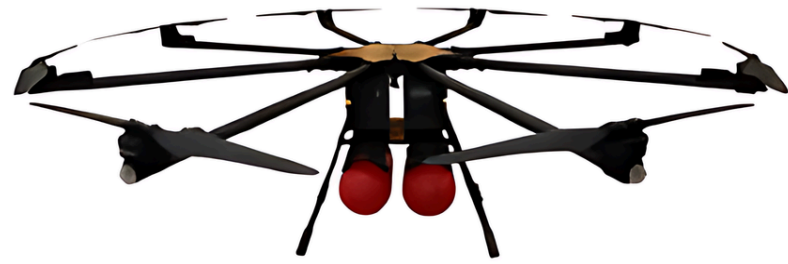
Operational temperature: -40° to 70°

Load option: Automatic buckle, fast loading

Flying mode: Automatic/Manual

Highlights:

- **Small**
- **Fast assemble**
- **FPV flying mode**
- **Anti fire projectile launcher**
- **Big payload**
- **Cross hair aiming**
- **Ideal for fire fighting**
- **Forest fire fighting capable**



Model: 3WWDZF8-50DS

Full span size: 295cm-295cm-79cm

Folded size: 190cm-80cm-79cm

Drone weight: 34kg

Max carry weight: 2x25Litre Anti fire bombs

Fly time: 45 minutes

Operational range: >5km(50km upgradable)

Accuracy: <0.5m(no wind)

Altitude: >5000m

Operational temperature:-40° to 70°

Load option: Automatic buckle, fast loading

Flying mode: Automatic/Manual

Highlights:

- Small
- Fast assemble
- FPV flying mode
- Big payload
- Cross hair aiming
- Ideal for fire fighting
- Forest fire control
- Can be used for supply transportation during emergency situations

Model: 3WWDZF6-100D

Full span size: 265cm-265cm-95cm

Folded size: 120cm-100cm-95cm

Drone weight: 46kg

Max carry weight: 100kg, 200m, 1.5in water hose/bag

Fly time: 35 minutes

Operational range: >5km(50km upgradable)

Accuracy: <0.5m(no wind)

Altitude: >5000m

Operational temperature:-40° to 70°

Load option: Automatic buckle, fast loading

Flying mode: Automatic/Manual

Highlights:

- Fast assemble
- FPV flying mode
- Big payload
- Cross hair aiming
- Ideal for fire fighting
- Forest fire control
- Can be used for supply transportation during emergency situations
- 200metre 1.5inch water projection package

SURVEILLANCE DRONES



Model: Thorn

Full span size: 17cm-2.8cm-4.8cm

Folded size: 16.5cm-2.8cm-4.8cm

Drone weight: 50g

Max carry weight: 50g

Fly time: 20minutes

Operational range: >5km

Accuracy: <0.5m(no wind)

Altitude: <3000m

Operational temperature: -30° to 60°

Flying mode: Automatic/Manual

Integrated speaker: Live voice transmission

Highlights:

- Small
- Micro surveillance drone
- Live video feed
- Stealthy
- Satellite guided
- Live information sharing
- 2.5km data link
- BVLOS surveillance
- Anti jamming data transfer capable
- Quiet and agile
- Smart collision sensors

Model: ZF450

Full span size: 49.6cm-49.6cm-10.6cm

Folded size: 36.1cm-36.1cm-10.6cm

Drone weight: 650g

Max carry weight: 500g

Fly time: 30minutes

Operational range: >5km

Accuracy: <0.5m(no wind)

Altitude: >3000m

Operational temperature: -30° to 60°

Flying mode: Automatic/Manual

Integrated speaker: Live voice transmission

Highlights:

- Small
- 2 axis viewing platform
- Live video feed
- Auto flight, flight by wire mode
- Target circling
- Auto return, descend
- Live information sharing
- Able to carry 500g payload
- Air payload release



Model: ZF680

Full span size: 68.3cm-68.3cm-24.8cm

Folded size: 68.3cm-68.3cm-24.8cm

Drone weight: 1.16kg

Max carry weight: 500g

Fly time: 60minutes

Operational range: >5km(50km upgradable)

Accuracy: <0.5m(no wind)

Altitude: >5000m

Operational temperature: -40° to 70°

Flying mode: Automatic/Manual

Integrated speaker: Live voice transmission

Highlights:

- Small
- Carbon fibre shell
- 10x focus laser viewing platform
- Live video feed
- Auto flight, flight by wire mode
- Target circling
- Auto return, descend
- Live information sharing
- Able to carry 500g payload
- Air payload release

Model: ZF1200

Full span size: 124cm-124cm-73cm

Folded size: 67cm-53cm-73cm

Drone weight: 5.7kg

Max carry weight: 5kg

Fly time: 40minutes

Operational range: >5km(50km upgradable)

Accuracy: <0.5m(no wind)

Altitude: >5000m

Operational temperature: -40° to 70°

Flying mode: Automatic/Manual

Integrated speaker: Live voice transmission

Highlights:

- Small
- Fast and easy assemble
- 10x focus laser viewing platform
- Live video feed
- Auto flight, flight by wire mode
- Target circling
- Auto return, descend
- Live information sharing
- Able to carry 5kg payload
- Air payload release



Compact data link all in one platform:

- 7in high resolution screen
- Real video feed
- Map view
- Real time flight data management
- Flight by path function
- Auto smart flight function